

Standard Spotter Signals

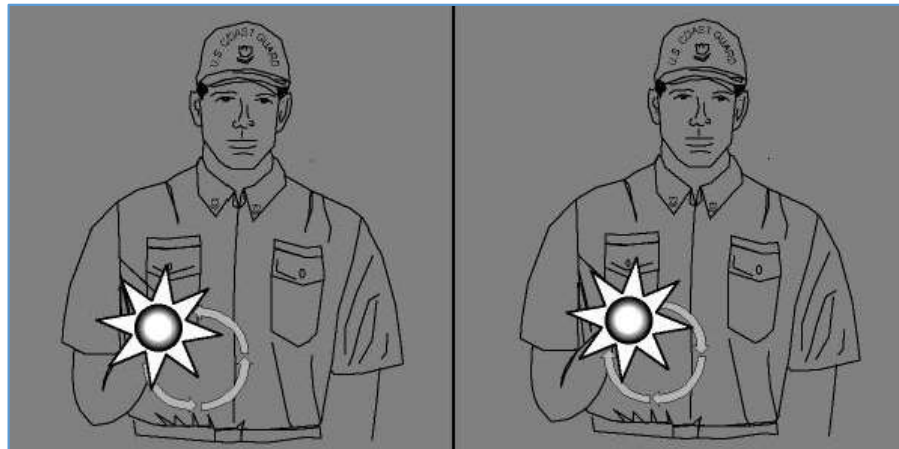
Instructions

Illustrations

Move vehicle in direction indicated using left or right hand.



Move vehicle in direction indicated using flashlight in low visibility situations. Signal indicates trailer or vehicle end needs to move left or right not that driver is to turn vehicle's wheels.



Standard Spotter Signals

Instructions

Illustrations

Move vehicle in direction of spotter.



Move vehicle in direction away from spotter.

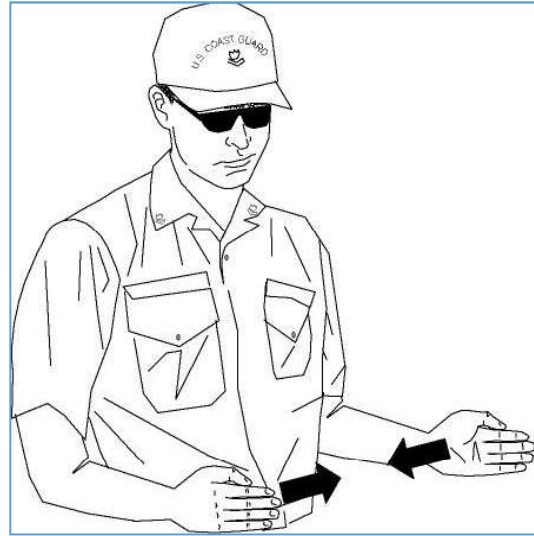


Standard Spotter Signals

Instructions

Illustrations

Indicate distance to obstruction. Distance remaining is indicated by separation of spotter's hands. Spotter's hands are to be close together as vehicle moves.



Stop. Distance to obstruction has closed to nothing. Acceptable alternative is to cross forearms.

